

New Education Society's  
Arts, Commerce and Science College, Lanja

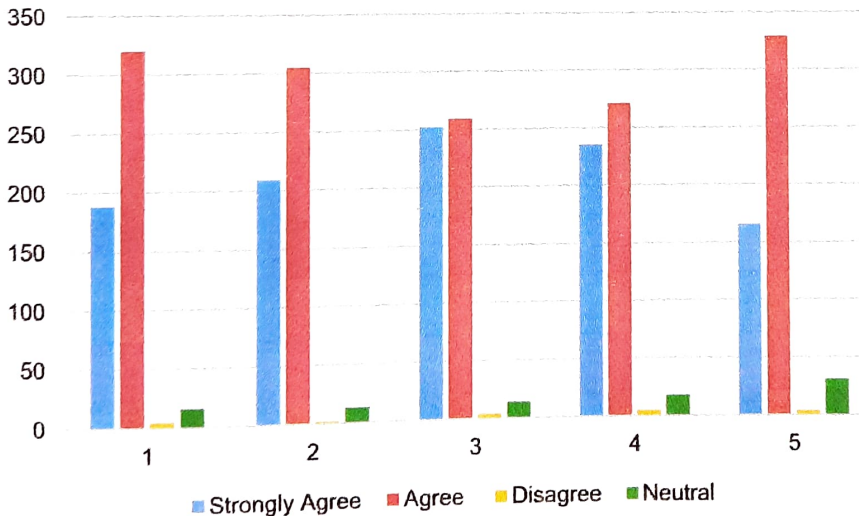
Feedback Analysis Report (2020-2021)

Parent Feedback on Curriculum 2020-2021

- | Q. No. | Question   |
|--------|--|
| 1      | Curriculum updated enough.                                 |
| 2      | Curriculum fulfilling your expectations.                   |
| 3      | Curriculum helping in developing personality.              |
| 4      | Curriculum applicable in daily life.                       |
| 5      | Curriculum is relevant for the solution of local problems. |

Q. No.	Strongly Agree	Agree	Disagree	Neutral	Total
1	188	320	5	16	529
2	209	305	2	13	529
3	252	259	4	14	529
4	235	271	5	18	529
5	165	329	4	31	529

Parent Feedback on Curriculum



*AS*  
Principal  
Arts, Commerce & Science College,  
Lanja, Dist. Ratnagiri (Maharashtra)

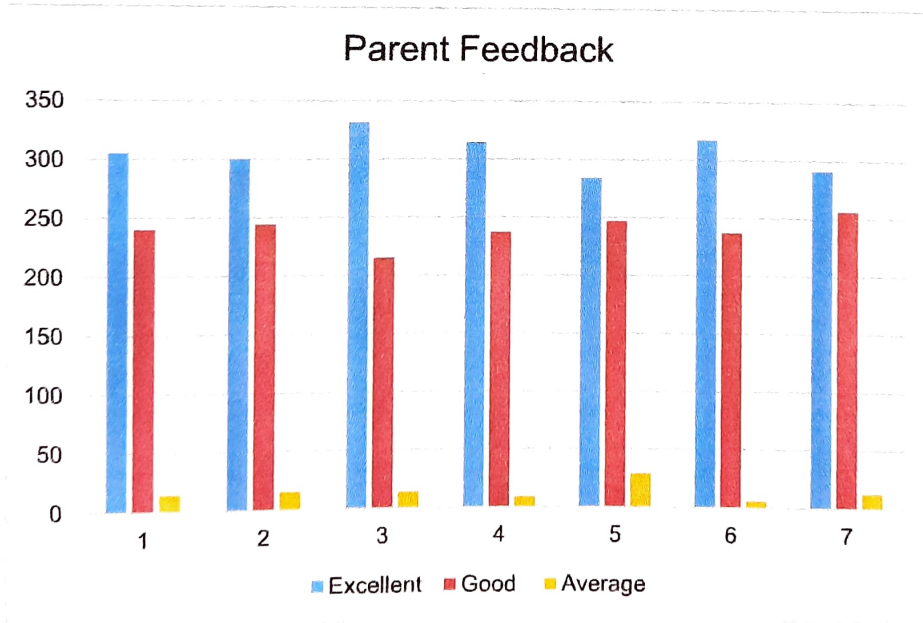
New Education Society's  
**Arts, Commerce and Science College, Lanja**

**Feedback Analysis Report (2020-2021)**

Parent Feedback 2020-2021

Q. No.	Question
1	Admission procedure.
2	Sports and cultural activities.
3	Library Facilities
4	Student's counseling and guidance.
5	Use of ICT in the college.
6	Examination system adopted by the college.
7	Do we provide academic Excellence.

Q. No.	Excellent	Good	Average	Total
1	305	240	15	560
2	300	244	16	560
3	331	215	14	560
4	314	237	9	560
5	284	247	29	560
6	317	237	6	560
7	291	256	13	560



*AK*  
Principal  
Arts, Commerce & Science College,  
Lanja, Dist. Ratnagiri (Maharashtra)

**New Education Society's  
Arts, Commerce and Science College, Lanja**

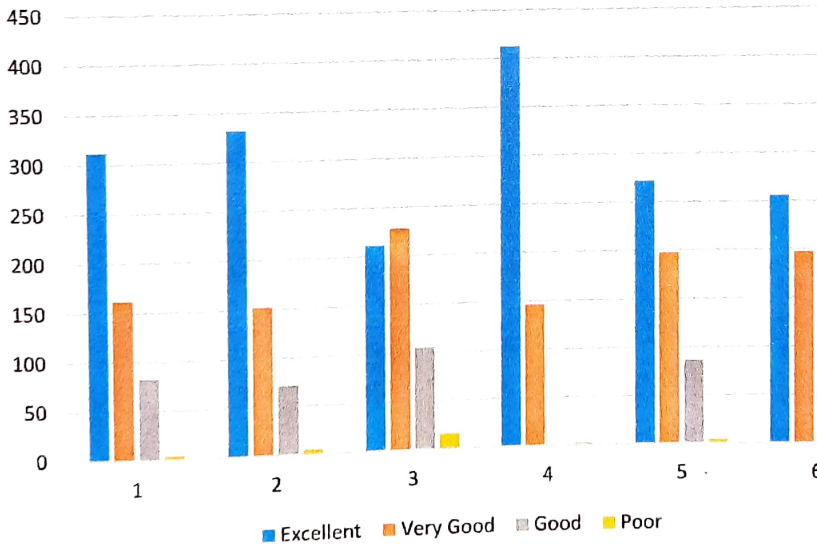
**Feedback Analysis Report (2020-21)**

Student's Feedback on College

- | Q.No. | Question   |
|-------|--|
| 1     | College Security.                                    |
| 2     | Cleanliness in College.                              |
| 3     | How do you rate the health care facilities?          |
| 4     | Campus is green and Eco-friendly.                    |
| 5     | How well are Laboratories equipped.                  |
| 6     | Opportunities provided by college to learn and grow. |

Q.No.	Excellent	Very Good	Good	Poor	Total
1	312	162	82	4	560
2	332	152	71	5	560
3	211	228	105	16	560
4	412	146	0	2	560
5	272	198	86	4	560
6	256	198	60	3	517

Student's Feedback on College

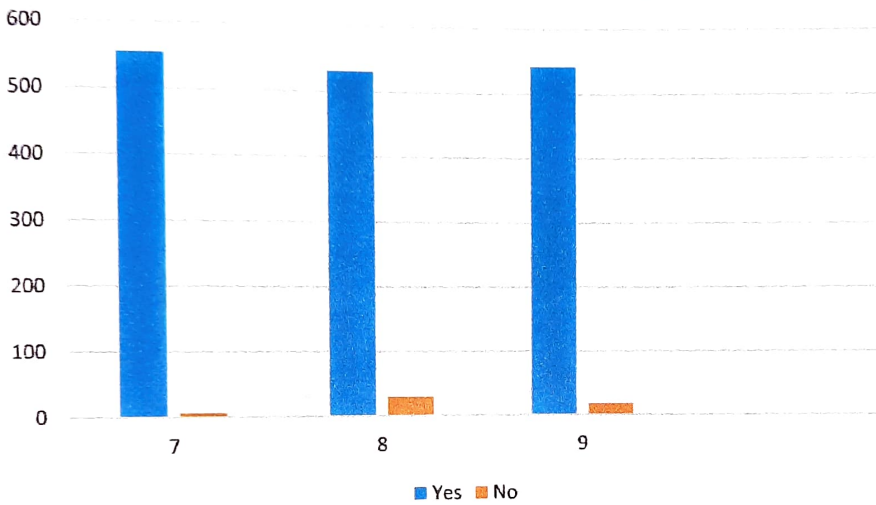


*ACK*  
Principal  
Arts, Commerce & Science College,  
Lanja, Dist. Ratnagiri (Maharashtra)

- Q.No.**      **Question**
- 7      Results are displayed by the college.
- 8      Sports Equipment's are available in gymkhana.
- 9      Did the internal assessment work?
- 10      What effect do you think the internal assessment have on your grades?

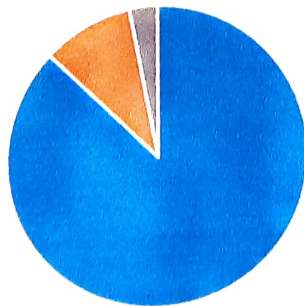
Q. No.	Yes	No	Total
7	554	6	560
8	531	29	560
9	542	18	560

Student's Feedback on College



Q.No.	Improve it	Cannot Say	No effect	Total
10	489	54	17	560

10. What effect do you think the internal assessment have on your grades?



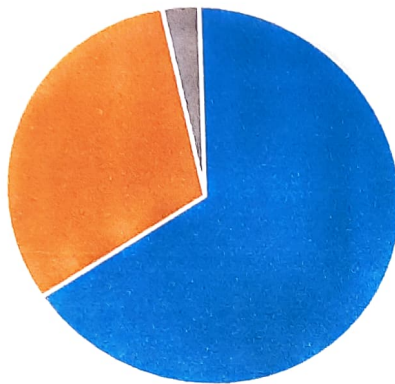
■ Improve it   ■ Cannot Say   ■ No effect



- Q.No. Question**
- 11 Were outsider experts invited to address you?
- 12 Did you visit industries, laboratories, banks and any other Universities.

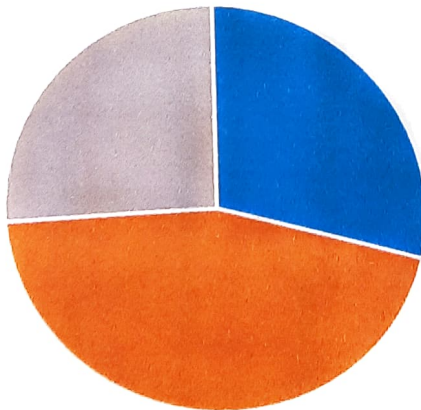
Q.No.	Frequently	Rarely	Never	Total
11	368	175	17	560
Q.No.	Frequently	Rarely	Never	Total
12	161	254	145	560

11. Were outsider experts invited to address you?



■ Frequently ■ Rarely ■ Never

12. Did you visit industries, laboratories, banks and any other Universities.



■ Frequently ■ Rarely ■ Never



*DeV*  
Principal  
Arts, Commerce & Science College,  
Lanja, Dist. Ratnagiri (Maharashtra)

New Education Society's  
**Arts, Commerce and Science College, Lanja**

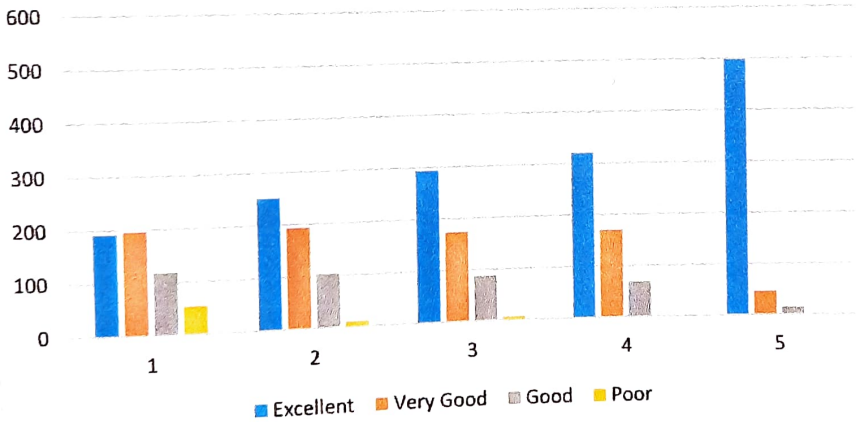
**Feedback Analysis Report(2020-21)**

Students Feedback on Library

- Q.No. Question**
- 1 Internet facility provided in the Library.
  - 2 Availability of the prescribed books / reading materials in the library.
  - 3 Library has sufficient place as reading room.
  - 4 Cleanliness and Environment in the library.
  - 5 Library Staff is Supportive.

Q.No.	Excellent	Very Good	Good	Poor	Total
1	192	196	118	54	560
2	251	194	104	11	560
3	293	173	87	7	560
4	320	170	68	2	560
5	498	46	15	1	560

**Students Feedback On Library**



*ACK*  
Principal

Arts, Commerce & Science College,  
Lanja, Dist.Ratnagiri(Maharashtra)



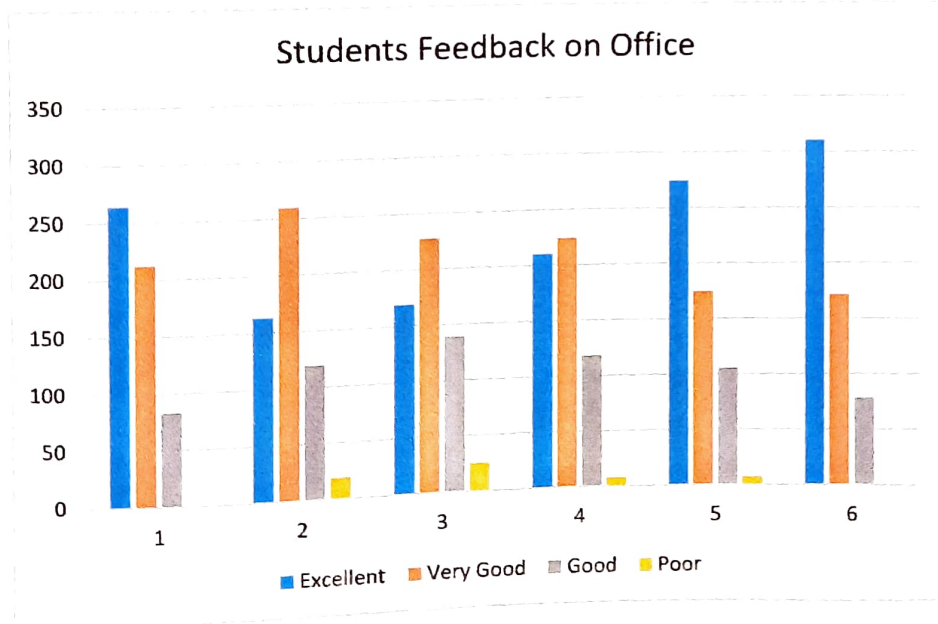
**New Education Society's**  
**Arts, Commerce and Science College, Lanja**

**Feedback Analysis Report(2020-21)**

Students Feedback on Office

- Q.No. Question**
- 1 Information provided by office.
  - 2 Time taken to obtain documents.
  - 3 Fees related communication.
  - 4 Standard procedure for various work.
  - 5 Co-operation from office.
  - 6 Overall office discipline.

Q.No.	Excellent	Very Good	Good	Poor	Total
1	264	212	83	1	560
2	163	259	119	19	560
3	169	227	139	25	560
4	210	224	118	8	560
5	274	174	105	7	560
6	310	171	78	1	560



*AS*  
Principal  
Arts, Commerce & Science College,  
Lanja, Dist. Ratnagiri (Maharashtra)

New Education Society's  
**Arts, Commerce and Science College, Lanja**

**Feedback Analysis Report (2020-21)**

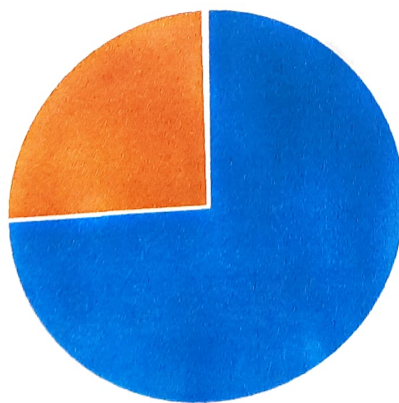
Students Feedback on Teaching

**Q.No. Question**

- 1 The teacher encourage participation and discussion in class.
- 2 Attendance record of the students is maintained by the teachers.
- 3 How did the teacher provide feedback on your performance?
- 4 How much Syllabus was completed in the class?
- 5 The teacher identify your strengths and encourage you with providing right level of challenges.
- 6 Teacher encourage you to participate in extracurricular activities.
- 7 Syllabus Oriented Teaching.
- 8 Lecture Preparation.
- 9 Skill of linking subject to life experience.
- 10 Creating Interest in the subject.
- 11 Refers to latest development in subject.
- 12 Use of teaching aids & innovative teaching methods.
- 13 Punctuality & regularity in class.
- 14 Syllabus Covering time.
- 15 Helps students in providing study material.

Q.No.	Strongly Agree	Agree	Disagree	Total
1	1054	349	4	1407

The teacher encourage participation and discussion in class.



■ Strongly Agree ■ Agree ■ Disagree



*ASZ*  
Principal  
Arts, Commerce & Science College,  
Lanja, Dist. Ratnagiri (Maharashtra)



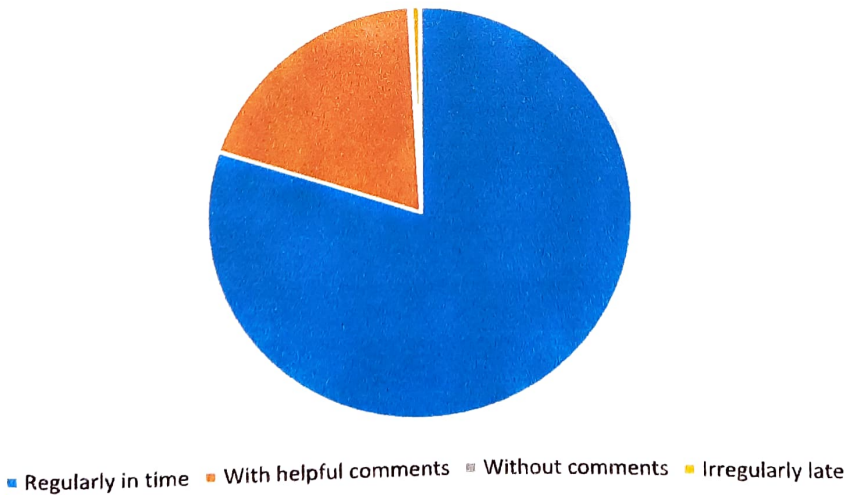
Q.No.	Yes	No	Maybe	Total
2	1383	4	20	1407

Attendance record of the students is maintained by the teachers.



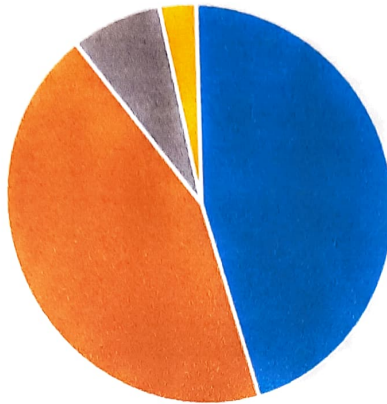
Q.No.	Regularly in time	With helpful comments	Without comments	Irregularly late	Total
3	1129	266	3	9	1407

How did the teacher provide feedback on your performance?



Q.No.	90-100%	80-90%	70-80%	less than 70%	Total
4	591	567	99	40	1297

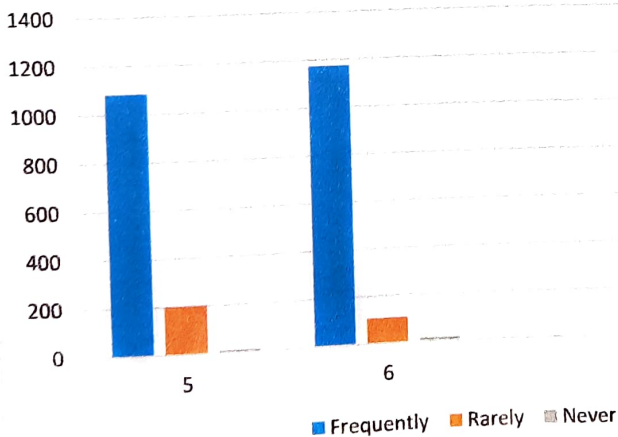
How much Syllabus was completed in the class?



■ 90-100% ■ 80-90% ■ 70-80% ■ less than 70%

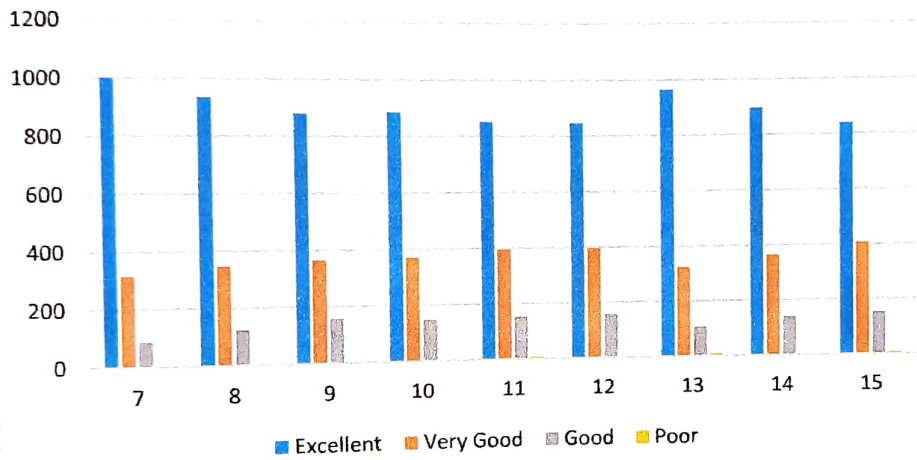
Q.No.	Frequently	Rarely	Never	Total
5	1084	203	10	1297
6	1174	108	15	1297

Students Feedback on Teaching



Q.No.	Excellent	Very Good	Good	Poor	Total
7	1001	315	87	4	1407
8	935	347	124	1	1407
9	880	365	157	5	1407
10	886	370	148	3	1407
11	852	395	153	7	1407
12	848	398	156	5	1407
13	965	325	107	10	1407
14	897	365	140	5	1407
15	840	406	154	7	1407

Students Feedback on Teaching



Principal  
 Arts, Commerce & Science College,  
 Lanja, Dist. Ratnagiri (Maharashtra)

New Education Society's  
**Arts, Commerce and Science College, Lanja**

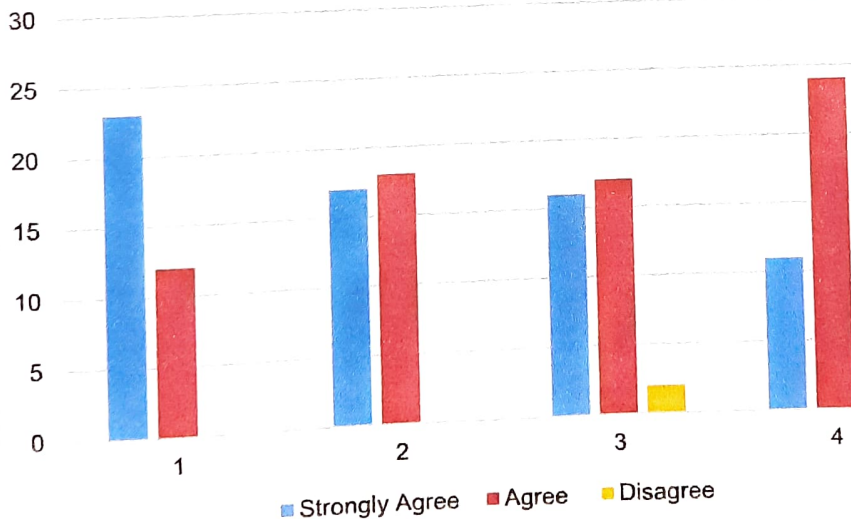
**Feedback Analysis Report (2020-2021)**

**Teachers Feedback on Curriculum 2020-2021**

- | Q. No. | Question  |
|--------|---|
| 1      | The Course/ Syllabus taught by me have a good balance between theory and application .                                  |
| 2      | The books/journals etc. prescribed / listed as reference materials are relevant, updated and cover the entire syllabus. |
| 3      | Curriculum is frequently revised as per requirements.   |
| 4      | Curriculum fulfilling your expectations.  |

Q. No.	Strongly Agree	Agree	Disagree	Total
1	23	12	0	35
2	17	18	0	35
3	16	17	2	35
4	11	24	0	35

Teachers Feedback on Curriculum



*Asky*  
Principal  
Arts, Commerce & Science College,  
Lanja, Dist. Ratnagiri (Maharashtra)

**New Education Society's  
Arts, Commerce and Science College, Lanja**

**Internal Quality Assurance Cell**

**Feedback Committee**

**Action taken report (2020-21)**

**Aspect: College and Other facilities**

Following is the action taken report on the suggestions received from different stake holders in the academic year 2019-20.

<b>Sr. No.</b>	<b>Suggestion</b>	<b>Action taken</b>
1.	Even if the Library has new books we cannot read them as we don't know the names of the books. So, there should be some facility to select the books.	Initiative taken to provide software that will do the job.
2.	No. of text Books not sufficient in the Library.	457 books purchased
3.	Mobile and use of internet should be allowed for students for study.	Allowed use of Smartphones in the campus for study use only.
4.	Internet speed in computer department.	BSNL Approx. 50 mbps



  
Principal  
Arts, Commerce & Science College,  
Lanja, Dist. Ratnagiri (Maharashtra)